

November

STAR: Students Together Assisting Refugees

WHAT IS X DAY?

IN THIS ISSUE:

- What is X Day?
- STAR's X Day
- Myanmar Refugee Crisis

X Days at Cary Academy are days dedicated to experiential learning. In the 2022-2023 school year, there are a total of 7 X Days for students to explore their interests.

Dr. Mc, Cary Academy's experiential director, states X Days are:

"Days without regularly-scheduled academic classes, X Days provide greatly expanded opportunities to plan and realize ambitious experiential learning for our students. Those opportunities may be related directly to our curriculum, they may enhance the curriculum by providing enrichment and demonstrations of cross-disciplinary and cross-divisional connections, and they may be beyond the scope of our curriculum but still provide new chances for exploratory and expeditionary learning"

Dr. Mc goes on to state how X Days follow the Kolb cycle:

"While a lot of what we do on X Days will be interesting and fun concrete experiences, those elements of the day will be connected to purposeful reflection, abstract conceptualization, and active experimentation. All of these are part of the pedagogy of experiential learning theorized by David Kolb in his "experiential learning cycle"



STAR's X Day- November 9

intro:

Have you ever tasted delectable Burmese noodles? What about authentic Burmese samosas? In this X-Day opportunity, you will get a chance to visit and tour Transplanting Traditions, a community farm run by Burmese refugees. You will get a chance to meet and chat with Burmese refugee farmers. After the visit to the farm, you will get a taste of authentic Burmese food by cooking up multiple delicious dishes using the farmers' own recipes! Get ready for a day filled with mouth-watering eats and perspective discussions with refugees!



STAR's X Day- Photos



X DAY SUCCESS!

- Visited Transplanting Traditions
- Learned from Burmese refugees



Transplanting Traditions

- Community farm with refugee farmers
- Grow seasonal vegetables grown traditionally in Burma
- Supports food sovereignty in the refugee community
 - Access to land
 - Education and opportunities for refugee farmers

Upheld Needs of Community

Advocate for Refugees

Value Equity in Food System

Uplift and Support leadership within refugee community

Invest Time to building relationships

Stewardship of land

MYANMAR

Who are the Rohingya?

The Rohingya are a mostly Muslim majority ethnic group who have lived in the majority Buddhist Myanmar for centuries. However, Myanmar does not recognise them as an official ethnic group, making them the largest identified stateless community in the world.

The United Nations has described the Rohingya as "the most persecuted minority in the world".

Approximately **1 MILLION** refugees living in refugee camps in Bangladesh

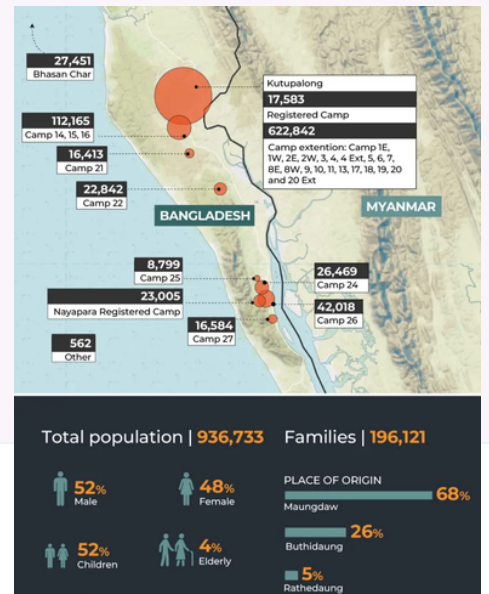
About **150,000** Rohingya are reported to be internally displaced as of the end of 2022.

Source: UNHCR | August 25, 2022

<https://www.aljazeera.com/news/2022/8/25/rohingya-exodus-explained-in-maps-and-charts>

The Rohingya Crisis in 90 Seconds

Watch on YouTube



SOURCES

1. Youtube.Com, 2023, <https://www.youtube.com/watch?v=yRnWtbZv83w>. Accessed 20 Feb 2023.
2. Marium Ali, Hanna Duggal. "Rohingya Exodus Explained In Maps And Charts". Aljazeera.Com, 2023, <https://www.aljazeera.com/news/2022/8/25/rohingya-exodus-explained-in-maps-and-charts>. Accessed 20 Feb 2023.
3. "Info Graphics : Myanmar-Bangladesh Refugee Crisis Response". Wvi.Org, 2023, <https://www.wvi.org/gallery/info-graphics-myanmar-bangladesh-refugee-crisis-response>. Accessed 20 Feb 2023.